



EXCLUSIVELY OFFERED FOR SALE BY

Fly Aeolus

Aircraft Sales & Acquisitions



1990

Piper Seneca III PA-34-220T

SE-LCA s/n 34-48007



Introducing the 1990 Piper Seneca III with a State-of-the-Art Glass Cockpit!

Discover the ultimate combination of classic reliability and modern innovation with this beautiful 1990 Piper Seneca III.

This iconic twin-engine aircraft has been upgraded to feature a cutting-edge glass cockpit, taking your flying adventures to new heights.

Upgrade your flying experience and fly with confidence, precision, and style.

Contact us today to schedule a demo or learn more about this remarkable aircraft.

1990
Piper Seneca III PA-34-220T
SERIAL 48007



1990
Piper Seneca III PA-34-220T
SE-LCA s/n 34-48007

Highlights

- Operated in Europe
- No known Damage History
- Always hangered
- CAMO controlled
- Garmin FlightStream 510
- Synthetic Vision
- FIKI (Flight into known ice)
- Factory Oxygen
- Air Conditioning
- Janitrol Heater
- Tanis Electric Engine pre-heaters
- 28v system
- Electric flaps
- All STC's validated by EASA

1990
Piper Seneca III PA-34-220T
SE-LCA s/n 34-48007





1990
Piper Seneca III PA-34-220T
SE-LCA s/n 34-48007

Airframe

Type	Piper PA-34-220T Seneca III
Registration	SE-LCA
Serial Number	34-48007
Year of Manufacture	1990
Total Time	2183 hours

Engine

Type	2x Continental TSIO/LTSIO 360-KB (220 HP)
Total Time (L)	2183 hours since new
Total Time (R)	458 hours since O/H

Propeller

Type	2x McCauley 3AF32C508/509 (3 blades)
Total Time (L)	166 hours since O/H
Total Time (R)	166 hours since O/H

VA 140 AT 4750 LBS

RADIO CALL SE-LCA

EMER BAT DISPATCH LIMIT 80% - SEE GPD AFMS



2200



102 1339

1990
Piper Seneca III PA-34-220T
SE-LCA s/n 34-48007

SWEDEN
PA-34-220T
SERIAL 34-48007
REG. SE-LCA
DATE 10/19/90
PIPER AIRCRAFT CORP.
MUSKOGEE, OKLAHOMA

VA 140 AT 4750 LBS

"N" NUMBER

V_A 136 AT 4407 LBS
SEE A.F.M.
V_{LO} 130 DN 100KTS
V_{LO} 130 MAX
DEMO X-WIND 17KTS

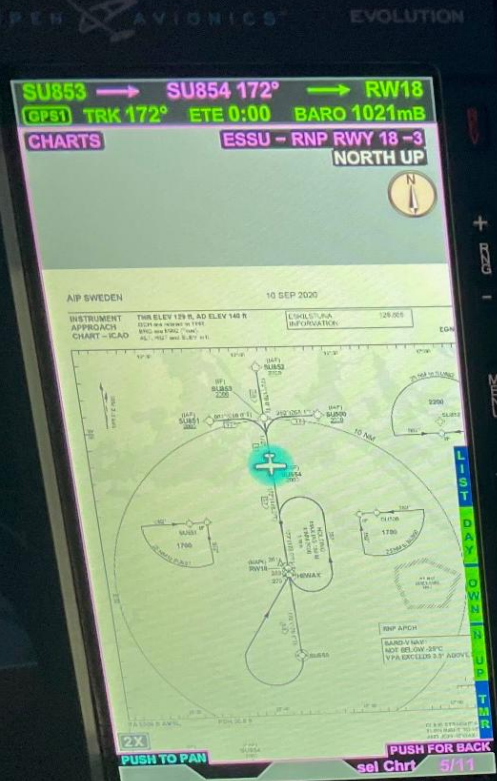
RADIO CALL
SE-LCA

EMER BAT DISPATCH
LIMIT 80% -SEE EFD AFMS

For	N	30	60	E	120	150
Steer	001	028	059	088	121	151
For	S	210	240	W	300	330
Steer	180	211	242	271	299	330
DATE:	25.06.2018					PFD 1000

For	N	30
Steer	359	030
For	S	210
Steer	180	211
DATE:	25.06.20	

PRESS
TO TEST



Avionics

- ASPEN Pro MAX 3-screen EFIS PFD and MFD,
- Garmin GTN750 GPS/COM/NAV
- Garmin GNS430WAAS GPS/COM/NAV
- Bendix/King KFC150 AutoPilot with ALT Pre-select KAS297B
- Garmin GMA345 audio panel with Bluetooth and USB-port
- Bendix/King DME
- Garmin GTX345R Mode-S/ADS-B-IN/OUT Transponder
- Trig TT31 Mode-S Transponder
- Bendix/King RDS81 Weather Radar System
- ADS-B In Traffic Info
- Artex ELT with PLB

1990

Piper Seneca III PA-34-220T
SE-LCA s/n 34-48007

MODE SYNC
0 20 30 F
FUEL U.S. GALS

MODE SYNC
0 20 30 F
FUEL U.S. GALS



Interior

Aircraft interior comprises of 6 individual seats in beige leather, of which 4 are placed in a club seating configuration, a beige carpet and a refreshment center.



1990
Piper Seneca III PA-34-220T
SE-LCA s/n 34-48007

Exterior

The aircraft has been painted in a white and blue colour with gold and blue striping.



1990
Piper Seneca III PA-34-220T
SE-LCA s/n 34-48007

For more information about this aircraft, contact Vincent Wigmans

vincent@faaircraftsales.com

+31 (0)15 820 0999

Specifications in this document can be used as introductory information. They do not constitute representations or warranties. Accordingly, you should rely on your own inspection of the aircraft.

Aircraft subject to prior sale, lease, or withdrawal from the market without notice.



Fly Aeolus

Aircraft Sales & Acquisitions